

# Lighting Tools Interior

Chapter 5  
Luminaires for sales cabinets



---

**Luminaires for Cold Stores**



Lumos®  
Head Luminaire  
Page 5.4



Lumos®  
Shelf Luminaire  
Page 5.4

---

**Luminaires for Deep Freezers**



Lumos®  
Cold Store Luminaire  
Page 5.14

---

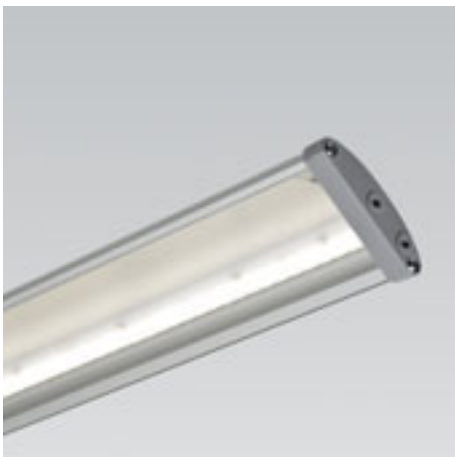
**Luminaires for Bread Shelves**



Lumos®  
Baked Goods  
Luminaire  
Page 5.18



## Lumos® LED Luminaires for open cold stores



The Lumos® luminaires, thanks to their innovative LED technology, emit reflection-free, shadow-free light, and with their slender housing represent a new quality of light for goods presentation in shelf units, cold stores and displays. The Lumos® LED cold store luminaires, by combining head luminaire and shelf luminaire, guarantee optimal light on all shelf levels due to precisely matched lighting technology, thus homogeneously illuminating each display.

for ideal illumination of sales shelves various concepts are possible: Thanks to a balanced control of light from the head luminaire, the upper display and the shelf front are homogeneously illuminated from top to bottom.

As a supplement to the head luminaire, the shelf luminaire is used for presentation of goods on the shelf base. whether in front or to the rear: all goods can be seen entirely, even when the first product rows are not filled.

Luminaires for standard shelf widths are available with the 1250 and 950 modules. This enables the complete shelf width to always be illuminated. With their slender body the luminaires fit perfectly into all types of cold store equipment.

### Housing

Housing of extruded aluminium, anodised; end caps of plastic | smooth housing profile, without joins or cooling ribs; screw-fastened end caps; cover of PMMA | fixing elements for mounting at face ends or clips variably mounted to cold store for fixing to the profile of the luminaire housing; suitable for various cold store systems  
protection rating: IP20 | insulation class: III

### Electrics

Luminaire wired ready for connection | with 2-pole connection cable, l=2m (head luminaire) or 1.2m (shelf luminaire), with plug system protected against reverse-polarity and humidity | separate gearbox with electronic control unit for several Lumos® LED luminaires to max. 150W | multiple plug distributor for connection of several luminaires; extension of cable between gearbox and luminaire via connection cable to max. 8m

### Lighting technology

The Lumos® LED luminaire system specifically uses low-power LEDs which with their small light points emit uniform light that is softly distributed in the shelving via highly modern optical technology | goods are presented without reflection or glare | with special colour temperatures, the Lumos® LED cold store luminaire emphasises the natural colours of presented goods in a sales-promoting way:

- neutral white for colour-true light over the complete colour spectrum (RA > 85)
- warm white for the appetising presentation of meat and cold meats
- cool white for attractive presentation of freshly caught, ice-cold fish

The Lumos® LED luminaire system for the first time combines two light control patterns in one luminaire:

- the head luminaire with narrow light distribution creates homogeneous light along the shelf front to the shelf base; it also completely illuminates the upper display with diffuse light
- the shelf luminaire emits homogeneous light for each shelf base

This opens up diverse concepts for shelf lighting:

- configuration only with head luminaire: thanks to balanced control of light from the head luminaire, the upper display and the shelf front are homogeneously illuminated from top to bottom - conventional head luminaires with fluorescent tubes are only able to distribute light highly unevenly.
- configuration with head luminaire and one shelf luminaire for the base area: as a supplement to the head luminaire, a shelf luminaire is for presentation of goods on the shelf base.
- configuration with head luminaire and shelf luminaires for each shelf base: The lighting levels of the head and shelf luminaires are precisely matched. Whether in front or to the rear: all goods are optimally presented, even when the first product rows are not filled.

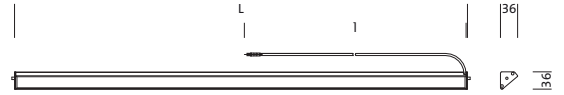


- + light colours matched for perfect goods presentation with unique colour rendering
- + state-of-the-art optics: shadow-free presentation without reflections on product surfaces
- + uniform light over complete shelf width due to matched luminaire dimensions
- + LED technology avoids thermal radiation at the light emission aperture
- + innovative, streamlined housing form avoids loss of cooling energy
- + minimised energy consumption due to innovative LED technology
- + less cooling and ventilation requirements due to minimised thermal output from luminaire
- + optimal use of energy efficiency of the refrigeration system
- + maintenance-free LED technology with long service life
- + smooth luminaire surface without cooling ribs or joins for easy, hygienic damp cleaning
- + maximum flexibility with regard to length, light colour and light distribution
- + individual mounting for all shelf systems



Lumos® LED head luminaire for open cold stores | light colour 4000K; for colour-true light across complete colour spectrum

Lumos® LED head luminaire for mounting behind the roller blind of the housing of open cold stores | LED with 4000K colour temperature\*\*; two light distribution patterns in one luminaire: extremely narrow distribution along the front of the shelving and diffuse distribution for the upper shelf surface; with diffuse cover | for separate gearbox\* | housing of aluminium profile, anodised; cover of PMMA



	L	l
15W/18W	934	2000
21W/24W	1234	2000

Protection rating: IP20

Insulation class: III

Protection symbol: F

Temperature range: -40°C..+25°C

\* control gear unit with ECG | ready for connection with mains terminal and pre-assembled cable with reverse-polarity protected plug connection to luminaire, l=2m

\*\* optimised colour temperature for ideal goods presentation:  
 - approx. 4000K for colour-true light across complete colour spectrum  
 - approx. 3500K for meat and cold meats  
 - approx. 5000K for fish and cheese

- rapid advances in LED technology achieve distinct energy efficiency improvements in the short-term. Siteco uses this for reduction of power consumption of the luminaire for identical luminous flux



Lamps	Luminous flux (lm)	Lamp wattage	L (mm)	Wt. (kg)	without CG, F Order No.
<b>single arrangement, 4000K</b>					
LED	938	15W	934	0.6	5GK51A07GH51
LED	1130	18W	934	0.6	5GK51A07GP51
LED	1250	21W	1234	0.8	5GK51A07NS51
LED	1500	24W	1234	0.8	5GK51A07NX51

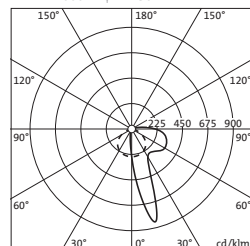
- please order gearbox separately
- please order suitable mounting accessories separately
- please order connection cable and 6-fold distributor separately if required

Mandatory accessories (for details see page 5.10 f.)

Article	Wt. (kg)	Order No.
ECG, for LED max. 150W	0.2	5GK90150VG
distribution rack 6-times, 2-pole outlet yellow (Tyco), L= 0.5 m, free wire ends	0.1	5GK90001V
connection cable, L= 5 m, free wire ends and outlet yellow (Tyco)	0.2	5GK90105LG
connecting cable 2-pole, L= 1 m, Plug and Outlet yellow (Tyco)	0.1	5GK90001LG
connecting cable 2-pole, L= 2 m, Plug and Outlet yellow (Tyco)	0.1	5GK90002LG
connecting cable 2-pole, L= 4 m, Plug and Outlet yellow (Tyco)	0.1	5GK90004LG
connecting cable 2-pole, L= 6 m, Plug and Outlet yellow (Tyco)	0.2	5GK90006LG
fastening bracket top shelf luminaire, for Carrier	0.1	5GK90011C
fastening clip top shelf luminaire, for universal	0.1	5GK90013E

5GK51A07NX51

1 x LED 4000K φN 1250 lm

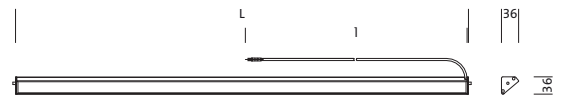


η<sub>LED</sub> 100%  
 I<sub>max</sub> 845 cd/klm at γ 15°



**Lumos® LED head luminaire for open cold stores | light colour 3500K; for meat and cold meats**

Lumos® LED head luminaire for mounting behind the roller blind of the housing of open cold stores | LED with 3500K colour temperature\*\*; two light distribution patterns in one luminaire: extremely narrow distribution along the front of the shelving and diffuse distribution for the upper shelf surface; with diffuse cover | for separate gearbox\* | housing of aluminium profile, anodised; cover of PMMA



	L	l
18W	934	2000
24W	1234	2000

Protection rating: IP20

Insulation class: III

Protection symbol: F

Temperature range: -40°C..+25°C

\* control gear unit with ECG | ready for connection with mains terminal and pre-assembled cable with reverse-polarity protected plug connection to luminaire, l=2m

\*\* specific light colours for optimal goods presentation:

- approx. 4000K for colour-true light across complete colour spectrum
- approx. 3500K for meat and cold meats
- approx. 5000K for fish and cheese

- rapid advances in LED technology achieve distinct energy efficiency improvements in the short-term. Siteco uses this for reduction of power consumption of the luminaire for identical luminous flux



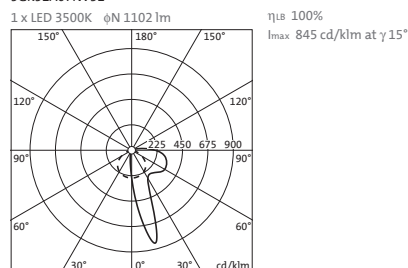
Lamps	Luminous flux (lm)	Lamp wattage	L (mm)	Wt. (kg)	without CG, F Order No.
<b>single arrangement, 3500K</b>					
LED	1020	18W	934	0.6	5GK51A07GK31
LED	1350	24W	1234	0.8	5GK51A07NV31

- please order gearbox separately
- please order suitable mounting accessories separately
- please order connection cable and 6-fold distributor separately if required

**Mandatory accessories (for details see page 5.10 f.)**

Article	Wt. (kg)	Order No.
ECG, for LED max. 150W	0.2	5GK90150VG
distribution rack 6-times, 2-pole outlet yellow (Tyco), L= 0.5 m, free wire ends	0.1	5GK90001V
connection cable, L= 5 m, free wire ends and outlet yellow (Tyco)	0.2	5GK90105LG
connecting cable 2-pole, L= 1 m, Plug and Outlet yellow (Tyco)	0.1	5GK90001LG
connecting cable 2-pole, L= 2 m, Plug and Outlet yellow (Tyco)	0.1	5GK90002LG
connecting cable 2-pole, L= 4 m, Plug and Outlet yellow (Tyco)	0.1	5GK90004LG
connecting cable 2-pole, L= 6 m, Plug and Outlet yellow (Tyco)	0.2	5GK90006LG
fastening bracket top shelf luminaire, for Carrier	0.1	5GK90011C
fastening clip top shelf luminaire, for universal	0.1	5GK90013E

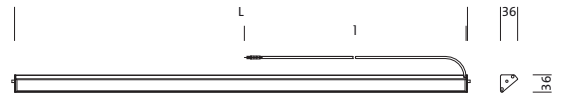
**5GK51A07NV31**





**Lumos® LED head luminaire for open cold stores | light colour 5000K; for fish and cheese**

Lumos® LED head luminaire for mounting behind the roller blind of the housing of open cold stores | LED with 5000K colour temperature\*\*; two light distribution patterns in one luminaire: extremely narrow distribution along the front of the shelving and diffuse distribution for the upper shelf surface; with diffuse cover | for separate gearbox\* | housing of aluminium profile, anodised; cover of PMMA



	L	l
15W/18W	934	2000
21W/24W	1234	2000

Protection rating: IP20

Insulation class: III

Protection symbol: F

Temperature range: -40°C..+25°C

\* control gear unit with ECG | ready for connection with mains terminal and pre-assembled cable with reverse-polarity protected plug connection to luminaire, l=2m

\*\* specific light colours for optimal goods presentation:

- approx. 4000K for colour-true light across complete colour spectrum
- approx. 3500K for meat and cold meats
- approx. 5000K for fish and cheese

- rapid advances in LED technology achieve distinct energy efficiency improvements in the short-term. Siteco uses this for reduction of power consumption of the luminaire for identical luminous flux



Lamps	Luminous flux (lm)	Lamp wattage	L (mm)	Wt. (kg)	without CG, F Order No.
<b>single arrangement, 5000K</b>					
LED	938	15W	934	0.6	5GK51A07GH71
LED	1130	18W	934	0.6	5GK51A07GP71
LED	1250	21W	1234	0.8	5GK51A07NS71
LED	1500	24W	1234	0.8	5GK51A07NX71

- please order gearbox separately
- please order suitable mounting accessories separately
- please order connection cable and 6-fold distributor separately if required

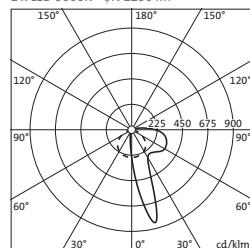
**Mandatory accessories (for details see page 5.10 f.)**

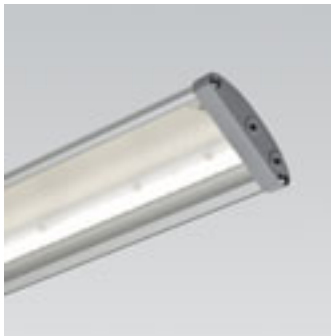
Article	Wt. (kg)	Order No.
ECG, for LED max. 150W	0.2	5GK90150VG
distribution rack 6-times, 2-pole outlet yellow (Tyco), L= 0.5 m, free wire ends	0.1	5GK90001V
connection cable, L= 5 m, free wire ends and outlet yellow (Tyco)	0.2	5GK90105LG
connecting cable 2-pole, L= 1 m, Plug and Outlet yellow (Tyco)	0.1	5GK90001LG
connecting cable 2-pole, L= 2 m, Plug and Outlet yellow (Tyco)	0.1	5GK90002LG
connecting cable 2-pole, L= 4 m, Plug and Outlet yellow (Tyco)	0.1	5GK90004LG
connecting cable 2-pole, L= 6 m, Plug and Outlet yellow (Tyco)	0.2	5GK90006LG
fastening bracket top shelf luminaire, for Carrier	0.1	5GK90011C
fastening clip top shelf luminaire, for universal	0.1	5GK90013E

**5GK51A07NX71**

1 x LED 5000K φN 1250 lm

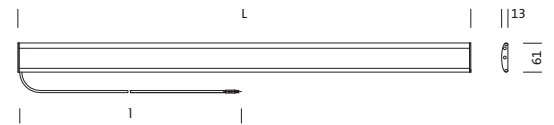
η<sub>LED</sub> 100%  
I<sub>max</sub> 845 cd/klm at γ 15°





Lumos® LED shelf luminaire for open cold stores | light colour 4000K; for colour-true light across complete colour spectrum

Lumos® LED shelf luminaire for mounting on shelf undersides of open cold stores | LED with 4000K colour temperature\*\*; asymmetric distribution for homogeneous illumination of a shelf surface; with diffuse cover | for separate gearbox\* | housing of aluminium profile, anodised; cover of PMMA



	L	l
11W/13W	920	2000
14W/18W	1220	2000

Protection rating: IP20

Insulation class: III

Protection symbol: F

Temperature range: -40°C..+25°C

\* control gear unit with ECG | ready for connection with mains terminal and pre-assembled cable with reverse-polarity protected plug connection to luminaire, l=1.2m

\*\* specific light colours for optimal goods presentation:  
 - approx. 4000K for colour-true light across complete colour spectrum  
 - approx. 3500K for meat and cold meats  
 - approx. 5000K for fish and cheese

- rapid advances in LED technology achieve distinct energy efficiency improvements in the short-term. Siteco uses this for reduction of power consumption of the luminaire for identical luminous flux



Lamps	Luminous flux (lm)	Lamp wattage	L (mm)	Wt. (kg)	without CG, F Order No.
<b>direct asymmetric distribution, 4000K</b>					
LED	620	11W	920	0.6	5GK52A07GA51
LED	780	13W	920	0.6	5GK52A07GC51
LED	830	14W	1220	0.8	5GK52A07NE51
LED	1040	18W	1220	0.8	5GK52A07NL51

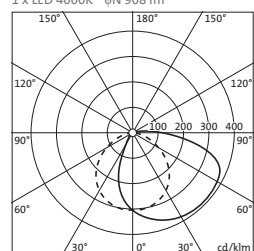
- please order gearbox separately  
 - please order suitable mounting accessories separately  
 - please order connection cable and 6-fold distributor separately if required

Mandatory accessories (for details see page 5.10 f.)

Article	Wt. (kg)	Order No.
ECG, for LED max. 150W	0.2	5GK90150VG
distribution rack 6-times, 2-pole outlet yellow (Tyco), L= 0.5 m, free wire ends	0.1	5GK90001V
connection cable, L= 5 m, free wire ends and outlet yellow (Tyco)	0.2	5GK90105LG
connecting cable 2-pole, L= 1 m, Plug and Outlet yellow (Tyco)	0.1	5GK90001LG
connecting cable 2-pole, L= 2 m, Plug and Outlet yellow (Tyco)	0.1	5GK90002LG
connecting cable 2-pole, L= 4 m, Plug and Outlet yellow (Tyco)	0.1	5GK90004LG
connecting cable 2-pole, L= 6 m, Plug and Outlet yellow (Tyco)	0.2	5GK90006LG
fastening bracket shelf luminaire, for Carrier	0.1	5GK90012C
fastening clip shelf luminaire, for EPTA	0.1	5GK90014E
fastening clip shelf luminaire, for universal	0.1	5GK90014R

5GK52A07NL51

1 x LED 4000K φN 908 lm

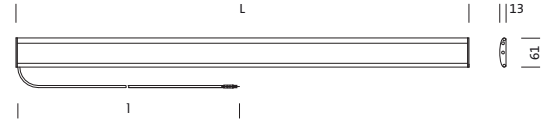


η<sub>LED</sub> 100%  
 I<sub>max</sub> 390 cd/klm at γ 45°



**Lumos® LED shelf luminaire for open cold stores | light colour 3500K; for meat and cold meats**

Lumos® LED shelf luminaire for mounting on shelf undersides of open cold stores | LED with 3500K colour temperature\*; asymmetric distribution for homogeneous illumination of a shelf surface; with diffuse cover | for separate gearbox\* | housing of aluminium profile, anodised; cover of PMMA



	L	l
13W	920	2000
18W	1220	2000

Protection rating: IP43  
 Insulation class: III  
 Protection symbol: F  
 Temperature range: -40°C..+25°C

\* control gear unit with ECG | ready for connection with mains terminal and pre-assembled cable with reverse-polarity protected plug connection to luminaire, l=1.2m  
 \*\* specific light colours for optimal goods presentation:  
 - approx. 4000K for colour-true light across complete colour spectrum  
 - approx. 3500K for meat and cold meats  
 - approx. 5000K for fish and cheese

- rapid advances in LED technology achieve distinct energy efficiency improvements in the short-term. Siteco uses this for reduction of power consumption of the luminaire for identical luminous flux



Lamps	Luminous flux (lm)	Lamp wattage	L (mm)	Wt. (kg)	without CG, F Order No.
<b>direct asymmetric distribution, 3500K</b>					
LED	690	13W	920	0.6	5GK52A07GB31
LED	920	18W	1220	0.9	5GK52A07NG31

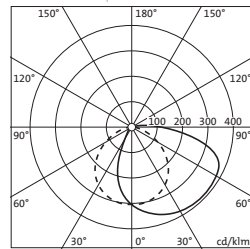
- please order gearbox separately  
 - please order suitable mounting accessories separately  
 - please order connection cable and 6-fold distributor separately if required

**Mandatory accessories (for details see page 5.10 f.)**

Article	Wt. (kg)	Order No.
ECG, for LED max. 150W	0.2	5GK90150VG
distribution rack 6-times, 2-pole outlet yellow (Tyco), L= 0.5 m, free wire ends	0.1	5GK90001V
connection cable, L= 5 m, free wire ends and outlet yellow (Tyco)	0.2	5GK90105LG
connecting cable 2-pole, L= 1 m, Plug and Outlet yellow (Tyco)	0.1	5GK90001LG
connecting cable 2-pole, L= 2 m, Plug and Outlet yellow (Tyco)	0.1	5GK90002LG
connecting cable 2-pole, L= 4 m, Plug and Outlet yellow (Tyco)	0.1	5GK90004LG
connecting cable 2-pole, L= 6 m, Plug and Outlet yellow (Tyco)	0.2	5GK90006LG
fastening bracket shelf luminaire, for Carrier	0.1	5GK90012C
fastening clip shelf luminaire, for EPTA	0.1	5GK90014E
fastening clip shelf luminaire, for universal	0.1	5GK90014R

**5GK52A07NG31**

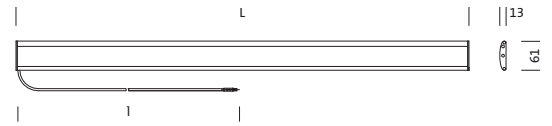
1 x LED 3500K φN 787 lm η<sub>LED</sub> 100%  
 I<sub>max</sub> 390 cd/klm at γ45°





**Lumos® LED shelf luminaire for open cold stores | light colour 5000K; for fish and cheese**

Lumos® LED shelf luminaire for mounting on shelf undersides of open cold stores | LED with 5000K colour temperature\*\*; asymmetric distribution for homogeneous illumination of a shelf surface; with diffuse cover | for separate gearbox\* | housing of aluminium profile, anodised; cover of PMMA



	L	l
11W/13W	920	2000
14W/18W	1220	2000

Protection rating: IP20  
 Insulation class: III  
 Protection symbol: F  
 Temperature range: -40°C..+25°C

\* control gear unit with ECG | ready for connection with mains terminal and pre-assembled cable with reverse-polarity protected plug connection to luminaire, l=1.2m  
 \*\* specific light colours for optimal goods presentation:  
 - approx. 4000K for colour-true light across complete colour spectrum  
 - approx. 3500K for meat and cold meats  
 - approx. 5000K for fish and cheese

- rapid advances in LED technology achieve distinct energy efficiency improvements in the short-term. Siteco uses this for reduction of power consumption of the luminaire for identical luminous flux



Lamps	Luminous flux (lm)	Lamp wattage	L (mm)	Wt. (kg)	without CG, F Order No.
<b>direct asymmetric distribution, 5000K</b>					
LED	620	11W	920	0.6	5GK52A07GA71
LED	780	13W	920	0.6	5GK52A07GC71
LED	830	14W	1220	0.8	5GK52A07NE71
LED	1040	18W	1220	0.8	5GK52A07NL71

- please order gearbox separately  
 - please order suitable mounting accessories separately  
 - please order connection cable and 6-fold distributor separately if required

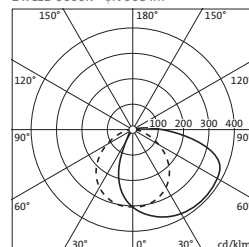
**Mandatory accessories (for details see page 5.10 f.)**

Article	Wt. (kg)	Order No.
ECG, for LED max. 150W	0.2	5GK90150VG
distribution rack 6-times, 2-pole outlet yellow (Tyco), L= 0.5 m, free wire ends	0.1	5GK90001V
connection cable, L= 5 m, free wire ends and outlet yellow (Tyco)	0.2	5GK90105LG
connecting cable 2-pole, L= 1 m, Plug and Outlet yellow (Tyco)	0.1	5GK90001LG
connecting cable 2-pole, L= 2 m, Plug and Outlet yellow (Tyco)	0.1	5GK90002LG
connecting cable 2-pole, L= 4 m, Plug and Outlet yellow (Tyco)	0.1	5GK90004LG
connecting cable 2-pole, L= 6 m, Plug and Outlet yellow (Tyco)	0.2	5GK90006LG
fastening bracket shelf luminaire, for Carrier	0.1	5GK90012C
fastening clip shelf luminaire, for EPTA	0.1	5GK90014E
fastening clip shelf luminaire, for universal	0.1	5GK90014R

**5GK52A07NL71**

1 x LED 5000K φN 908 lm

η<sub>LED</sub> 100%  
 I<sub>max</sub> 390 cd/klm at γ 45°



## Lumos® Mounting Accessories

**Mounting bracket for head luminaire**

Especially for Carrier shelving brand (matching fixing points) or as universal mounting | mounting to underside of shelving canopy | luminaire fixing at face ends | mounting bracket of sheet steel, galvanised and coated, graphite grey (RAL 7024)

Type

Mounting bracket for head lum.

for shelf system

carrier | universal

Order no.

5GK90011C

**Mounting clip for head luminaire**

Mounting to underside of shelving canopy | variable luminaire fixing via clipping in to profile of luminaire housing | mounting bracket of V4A spring steel

Type

Mounting clip for head luminaire

for shelf system

universal

Order no.

5GK90013E

**Mounting bracket for shelf luminaire**

Especially for Carrier shelving brand (matching fixing points) or as universal mounting | mounting to underside of shelving base | luminaire fixing at face ends | mounting bracket of sheet steel, galvanised and coated, graphite grey (RAL 7024)

Type

Mounting bracket for shelf lum.

for shelf system

carrier | universal

Order no.

5GK90012C

**Mounting clip for shelf luminaire**

Especially for EPTA shelving brand (matching fixing points) or as universal mounting | mounting at face ends to the shield of the shelf base | variable luminaire fixing via clipping in to profile of luminaire housing | mounting bracket of V4A spring steel

Type

Mounting clip for shelf luminaire

for shelf system

EPTA | universal

Order no.

5GK90014E

**Mounting clip for shelf luminaire**

Mounting to underside of shelf base | variable luminaire fixing via clipping in to profile of luminaire housing | mounting bracket of V4A spring steel

Type

Mounting clip for shelf luminaire

for shelf system

universal

Order no.

5GK90014R

## Lumos® Electrical Accessories

**Ballast unit**

Electronic ballast for operation of one or several luminaires to max. 150W | with 3-pole mains terminal, max. 2.5mm<sup>2</sup> | on luminaire side with 2-pole connection terminal, max. 2.5mm<sup>2</sup>; for connection of multiple plug distributor or socket cable  
protection rating: IP43  
insulation class II

Type	Wattage	Order no.
Electronic ballast	150	5GK90150VG

**Multiple plug distributor**

6-fold coupling for connection of several luminaires to one ballast | sockets on luminaire side reverse-polarity protected, protected against humidity | 2-pole cable, l=0.5m, with free wire ends for connection to electronic ballast  
protection rating: IP20  
insulation class II

Type	Length (m)	Order no.
Plug distributor	0.5	5GK90001V

**Connection cable, socket at one end**

for connection of luminaire to ballast | socket on luminaire side reverse-polarity protected, protected against humidity | 2-pole cable, l= 5m, with free wire ends for connection to electronic ballast  
protection rating: IP20  
insulation class II

Type	Length (m)	Order no.
Connection cable	5.0	5GK90105LG

**Connection cable, plug - socket**

for connection of a luminaire to multiple plug distributor | with plug and socket; reverse-polarity protected, protected against humidity | 2-pole cable, l= 5m, with free wire ends for connection to electronic ballast  
protection rating: IP20  
insulation class II

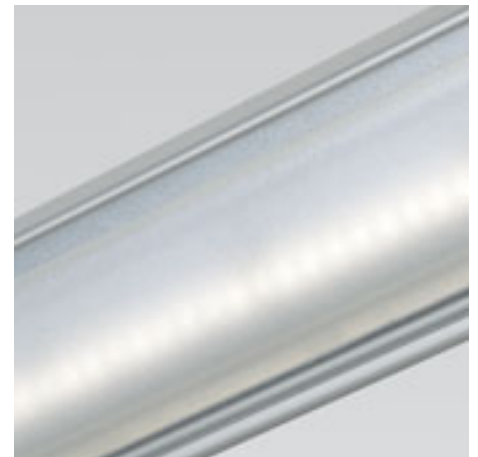
Type	Length (m)	Order no.
Connection cable	1.0	5GK90001LG
Connection cable	2.0	5GK90002LG
Connection cable	4.0	5GK90004LG
Connection cable	6.0	5GK90006LG



## Lumos® LED cold store luminaire

The Lumos® luminaires, thanks to their innovative LED technology, emit reflection-free, shadow-free light, and with their slender housing represent a new quality of light for goods presentation. The Lumos® LED cold store luminaire illuminates the complete freezer uniformly and prevents disturbing stray light above the freezer edge. With their slender body the luminaires blend well below the shield at the cold store edge.

- + perfect goods presentation with unique colour rendition
- + state-of-the-art lighting technology for shadow-free presentation without reflections on product surfaces
- + uniform light over complete shelf width due to coordinated luminaire dimensions
- + LED technology avoids thermal radiation at the light emission aperture
- + minimised energy consumption due to innovative LED technology
- + less cooling and ventilation requirements due to minimised thermal output from luminaire
- + optimal use of energy efficiency of the refrigeration system
- + maintenance-free LED technology with long service life
- + smooth luminaire surface without cooling ribs or joins for easy, hygienic damp cleaning



### Housing

Housing of extruded aluminium, anodised; end caps of plastic | smooth housing profile, without joins or cooling ribs; screw-fastened end caps; cover of PMMA | fixing elements for clips variably mounted to cold store for fixing to the profile of the luminaire housing  
Protection rating: IP20 | insulation class: III

### Electrics

Luminaire wired ready for connection | with 2-pole connection cable, l=1.5m, with plug system protected against reverse-polarity and humidity | separate gearbox with electronic control unit for several Lumos® LED luminaires to max. 150W | multiple plug distributor for connection of several luminaires; extension of cable between gearbox and luminaire via connection cable to max. 8m

### Lighting technology

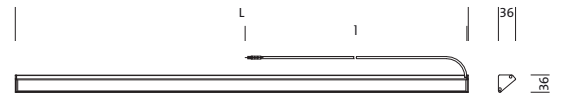
The Lumos® LED luminaire system specifically uses low-power LEDs which with their small light points emit uniform light that is softly distributed in the cold store via highly modern optical technology. Goods are presented without reflection or glare. With neutral white light, all colours in the complete spectrum are rendered colour-true and true-to-life (RA > 85). The common deficit with LED light that colours are perceived as being artificial or greyish is thus convincingly eliminated.

The Lumos® LED cold store luminaire emits extremely asymmetric light in the horizontal plane. With double-sided arrangements on the front and rear walls of the cold store, the luminaire creates homogeneous light in the complete display without glare from stray light emitted upwards.



Lumos® LED luminaire for cold stores | light colour 4000K; for colour-true light across complete colour spectrum

Lumos® LED for mounting to upper edge of open cold stores or cold stores equipped with glass cover | LED with 4000K colour temperature\*\*; asymmetric light in the horizontal plane, extremely narrow distribution without stray light upwards; with diffuse cover | for separate gearbox\* | housing of aluminium profile, anodised; cover of PMMA



	L	l
7W	620	1500
11W	920	1500
14W	1220	1500
18W	1520	1500

Protection rating: IP20

Insulation class: III

Protection symbol: F

Temperature range: -40°C..+25°C

\* control gear unit with ECG | ready for connection with mains terminal and pre-assembled cable with reverse-polarity protected plug connection to luminaire, l=1.5m  
 \*\* neutral white light for true-to-life presentation of frozen goods; with unique rendition of all colours in complete colour spectrum

- rapid advances in LED technology achieve distinct energy efficiency improvements in the short-term. Siteco uses this for reduction of power consumption of the luminaire for identical luminous flux



Lamps	Luminous flux (lm)	Lamp wattage	L (mm)	Wt. (kg)	without CG, F Order No.
<b>single/continuous arrangement, 4000K</b>					
LED	620	7W	620	0.4	5GK61A07AA51
LED	620	11W	920	0.6	5GK61A07GA51
LED	620	14W	1220	0.8	5GK61A07NE51
LED	620	18W	1520	1.0	5GK61A07TL51

- please order gearbox separately
- please order suitable mounting accessories separately
- please order connection cable and 6-fold distributor separately if required

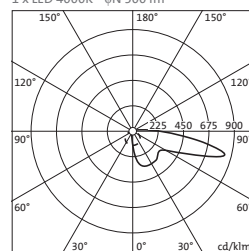
Mandatory accessories (for details see page 5.14)

Article	Wt. (kg)	Order No.
ECG, for LED max. 150W	0.2	5GK90150VG
distribution rack 6-times, 2-pole outlet yellow (Tyco), L= 0.5 m, free wire ends	0.1	5GK90001V
connection cable, L= 5 m, free wire ends and outlet yellow (Tyco)	0.2	5GK90105LG
connecting cable 2-pole, L= 1 m, Plug and Outlet yellow (Tyco)	0.1	5GK90001LG
connecting cable 2-pole, L= 2 m, Plug and Outlet yellow (Tyco)	0.1	5GK90002LG
connecting cable 2-pole, L= 4 m, Plug and Outlet yellow (Tyco)	0.1	5GK90004LG
connecting cable 2-pole, L= 6 m, Plug and Outlet yellow (Tyco)	0.2	5GK90006LG
fastening clip top shelf luminaire, for universal	0.1	5GK90013E

5GK61A07GA51

1 x LED 4000K φN 500 lm

η<sub>LED</sub> 100%  
 I<sub>max</sub> 836 cd/klm at γ 75°



## Lumos® Mounting Accessories



### Mounting clip for head luminaire

Mounting to underside of shelf canopy | variable luminaire fixing via clipping in to profile of luminaire housing | mounting bracket of V4A spring steel

Type	for shelf system	Order no.
Mounting clip for head luminaire	universal	5GK90013E

## Lumos® Electrical Accessories



### Ballast unit

Electronic ballast for operation of one or several luminaires to max. 150W | with 3-pole mains terminal, max. 2.5mm<sup>2</sup> | on luminaire side with 2-pole connection terminal, max. 2.5mm<sup>2</sup>; for connection of multiple plug distributor or socket cable  
protection rating: IP43  
insulation class II

Type	Wattage	Order no.
Electronic ballast	150	5GK90150VG



### Multiple plug distributor

6-fold coupling for connection of several luminaires to one ballast | sockets on luminaire side reverse-polarity protected, protected against humidity | 2-pole cable, l=0.5m, with free wire ends for connection to electronic ballast  
protection rating: IP20  
insulation class II

Type	Length (m)	Order no.
Plug distributor	0.5	5GK90001B



### Connection cable, socket at one end

for connection of luminaire to ballast | socket on luminaire side reverse-polarity protected, protected against humidity | 2-pole cable, l= 5m, with free wire ends for connection to electronic ballast  
protection rating: IP20  
insulation class II

Type	Length (m)	Order no.
Connection cable	5.0	5GK90105LG



### Connection cable, plug - socket

for connection of a luminaire to multiple plug distributor | with plug and socket; reverse-polarity protected, protected against humidity | 2-pole cable, l= 5m, with free wire ends for connection to electronic ballast  
protection rating: IP20  
insulation class II

Type	Length (m)	Order no.
Connection cable	1.0	5GK90001LG
Connection cable	2.0	5GK90002LG
Connection cable	4.0	5GK90004LG
Connection cable	6.0	5GK90006LG



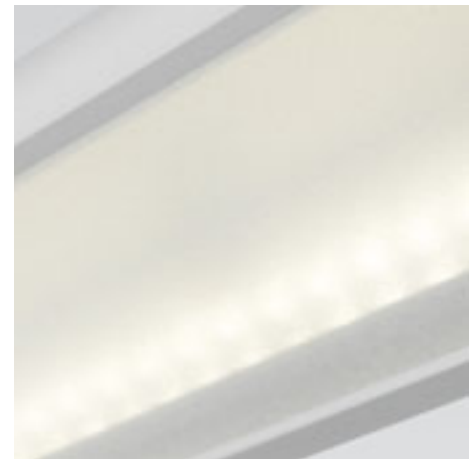
## Lumos® LED luminaire for bread shelves and baked goods

The Lumos® luminaires, thanks to their innovative LED technology, emit reflection-free, shadow-free light, and with their slender housing represent a new quality of light for goods presentation in shelf units, cold stores and displays.

The Lumos® LED luminaire for bread and baked goods guarantees good light for displays. With matched modules the luminaire illuminates the complete width of shelving for all standard shelf systems. The slender luminaire body blends 'invisibly' into any shelf unit.

Goods are presented without reflection or glare due to balanced light control and light distribution direction settable via the fixing clips.

- + perfect goods presentation with unique colour rendition
- + state-of-the-art lighting technology for shadow-free presentation without reflections on product surfaces
- + uniform light over complete shelf width due to coordinated luminaire dimensions
- + LED technology avoids thermal radiation at the light emission aperture
- + minimised energy consumption due to innovative LED technology
- + maintenance-free LED technology with long service life
- + smooth luminaire surface without cooling ribs or joins for easy, hygienic damp cleaning



### Housing

Housing of extruded aluminium, anodised; end caps of plastic | smooth housing profile, without joins or cooling ribs; screw-fastened end caps; cover of PMMA | fixing elements for clips variably mounted to shelf base for fixing to the profile of the luminaire housing | IP20, insulation class III

### Electrics

Luminaire wired ready for connection | with 2-pole connection cable, l=1.2m, with plug system protected against reverse-polarity and humidity | separate gearbox with electronic control unit for several Lumos® LED luminaires to max. 150W | multiple plug distributor for connection of several luminaires; extension of cable between gearbox and luminaire via connection cable to max. 8m

### Lighting technology

The Lumos® LED luminaire system specifically uses low-power LEDs which with their small light points emit uniform light that is softly distributed into the display via highly modern optical technology. Goods are presented without reflection or glare.

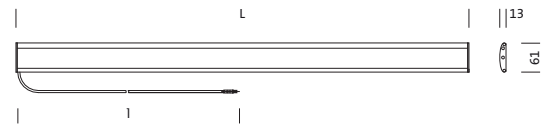
With warm-white light, Lumos® LED for bread and baked goods positively emphasises the natural colours of the presented goods. It convinces with homogeneous light for any shelf base.

The symmetric distribution characteristic can be set in steps via the fixing clips and can thus be individually optimised for the inclination and depth of any shelf base.



Lumos® LED luminaire for bread shelves | light colour 3000K; for colour-true presentation of freshly baked goods

Lumos® LED shelf luminaire for mounting on undersides of shelves and displays for bread and baked goods | LED with 3000K colour temperature\*\*; symmetric distribution for homogeneous illumination of a shelf surface; with diffuse cover | for separate gearbox\* | housing of aluminium profile, anodised; cover of PMMA



	L	l
11W	920	2000
14W	1220	2000

Protection rating: IP20

Insulation class: III

Protection symbol: F

\* control gear unit with ECG | ready for connection with mains terminal and pre-assembled cable with plug connection to luminaire, l=1.2m

\*\* warm-white light for colour-true presentation of freshly baked goods

- rapid advances in LED technology achieve distinct energy efficiency improvements in the short-term. Siteco uses this for reduction of power consumption of the luminaire for identical luminous flux



Lamps	Luminous flux (lm)	Lamp wattage	L (mm)	Wt. (kg)	without CG, F Order No.
<b>direct symmetric distribution, 3000K</b>					
LED	610	11W	920	0.6	5GK52S07GA21
LED	815	14W	1220	0.8	5GK52S07NE21

- please order gearbox separately
- please order suitable mounting accessories separately
- please order connection cable and 6-fold distributor separately if required

Mandatory accessories (for details see page 5.18)

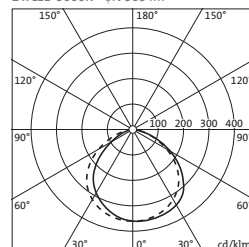
Article	Wt. (kg)	Order No.
ECG, for LED max. 150W	0.2	5GK90150VG
distribution rack 6-times, 2-pole outlet yellow (Tyco), L= 0.5 m, free wire ends	0.1	5GK90001V
connection cable, L= 5 m, free wire ends and outlet yellow (Tyco)	0.2	5GK90105LG
connecting cable 2-pole, L= 1 m, Plug and Outlet yellow (Tyco)	0.1	5GK90001LG
connecting cable 2-pole, L= 2 m, Plug and Outlet yellow (Tyco)	0.1	5GK90002LG
connecting cable 2-pole, L= 4 m, Plug and Outlet yellow (Tyco)	0.1	5GK90004LG
connecting cable 2-pole, L= 6 m, Plug and Outlet yellow (Tyco)	0.2	5GK90006LG
fastening clip shelf luminaire, for universal	0.1	5GK90014R

5GK52S07GA21

1 x LED 3000K φN 503 1m

η<sub>LED</sub> 100%

l<sub>max</sub> 363 cd/klm at γ 5°



## Lumos® Mounting Accessories



### Mounting clip for shelf luminaire

Mounting to underside of shelf base | variable luminaire fixing via clipping in to profile of luminaire housing | mounting bracket of V4A spring steel

Type	for shelf system	Order no.
Mounting clip for shelf luminaire	universal	5GK90014R

## Lumos® Electrical Accessories



### Ballast unit

Electronic ballast for operation of one or several luminaires to max. 150W | with 3-pole mains terminal, max. 2.5mm<sup>2</sup> | on luminaire side with 2-pole connection terminal, max. 2.5mm<sup>2</sup>; for connection of multiple plug distributor or socket cable  
protection rating: IP43  
insulation class II

Type	Wattage	Order no.
Electronic ballast	150	5GK90150VG



### Multiple plug distributor

6-fold coupling for connection of several luminaires to one ballast | sockets on luminaire side reverse-polarity protected, protected against humidity | 2-pole cable, l=0.5m, with free wire ends for connection to electronic ballast  
protection rating: IP20  
insulation class II

Type	Length (m)	Order no.
Plug distributor	0.5	5GK90001B



### Connection cable, socket at one end

for connection of luminaire to ballast | socket on luminaire side reverse-polarity protected, protected against humidity | 2-pole cable, l= 5m, with free wire ends for connection to electronic ballast  
protection rating: IP20  
insulation class II

Type	Length (m)	Order no.
Connection cable	5.0	5GK90105LG



### Connection cable, plug - socket

for connection of a luminaire to multiple plug distributor | with plug and socket; reverse-polarity protected, protected against humidity | 2-pole cable, l= 5m, with free wire ends for connection to electronic ballast  
protection rating: IP20  
insulation class II

Type	Length (m)	Order no.
Connection cable	1.0	5GK90001LG
Connection cable	2.0	5GK90002LG
Connection cable	4.0	5GK90004LG
Connection cable	6.0	5GK90006LG

