



Lighting Management Systems | Sitecontrol



DALI Comfort
[page 15 | 4](#)



DALI Digidim
[page 15 | 6](#)



DALI Kiss
[page 15 | 8](#)



Presence Detector
[page 15 | 10](#)



Remote Control
[page 15 | 11](#)



DALI Comfort



**DALI Comfort
Room and Building Solution**

- features
- control system for 1 or 3 x 64 DALI operating devices
 - 16 groups and scenes per DALI line
 - 4 relay outputs and 4 push button inputs
 - connection of operating devices for:
 - up to 4 button interfaces, 8 gang
 - up to 4 LCD push button panels
 - up to 3 touch panels (4" und 7")
 - communication / networking:
 - Ethernet (TCP/IP)
 - AXLink
 - ICSNet
 - DALI

- benefits
- graphical, internet-based configuration software for PC/laptop, for addressing and configuring of operating devices, groups, scenes, touch panels and operating functions and interfaces
 - automatic creation of the user interface (touch panel) and LCD display text (LCD push button panel) with setup software according to pre-configured installer settings
 - networking of any number of DALI Comfort operating devices to a building-wide system with LAN Ethernet



7" touch panel for table-surface and recessed wall mounting
with integrated microphone | loudspeaker | movement and light sensor | 6 freely allocatable control keys



LCD touch panel
black or white | with LCD display | 6 freely allocatable control keys | integrated temperature sensor

4" touch panel for table-surface and recessed wall mounting
with integrated microphone | loudspeaker | movement and light sensor | 6 freely allocatable control keys



DALI Comfort control unit

| Order No. | Type | B x H x D (mm) | ET (mm) |
|---|--|----------------|---------|
| touch panel 7" colour display, touch-sensitive | | | |
| 5LZ 908 221 | recessed wall installation, black | 200 151 10 | 87 |
| 5LZ 908 222 | table surface-mounted, black | 202 174 176 | |
| 5LZ 908 229 | recessed housing, 7" | | |
| touch panel 4" colour display, touch-sensitive | | | |
| 5LZ 908 211 | recessed wall installation, white | 134 130 10 | 51 |
| 5LZ 908 212 | recessed wall installation, black | 134 130 10 | 51 |
| 5LZ 908 213 | table surface-mounted, dark grey | 134 103 123 | |
| 5LZ 908 214 | table surface-mounted, silver | 134 103 123 | |
| 5LZ 908 219 | recessed housing, 4" | | |
| LCD touch control | | | |
| 5LZ 908 201 | recessed wall installation, white | 84 114 8 | 39 |
| 5LZ 908 202 | recessed wall installation, black | 84 114 8 | 39 |
| 5LZ 908 209 | recessed housing | | |
| DALI-Comfort control unit, web-compatible | | | |
| 5LZ 908 101 | single DALI | 433 125 55 | |
| 5LZ 908 103 | triple DALI | 433 125 55 | |
| universal mains adapter for DALI control unit or touch panel | | | |
| 5LZ 908 001 | for Comfort control unit, 24V 60W, table surface-mounted | | |
| 5LZ 908 002 | for all touch panels, 14V 40W, table surface-mounted | | |
| 5LZ 908 003 | for all touch panels, 14V 100W, row surface-mounted | | |

□ ET=installed depth

- ➔ DALI HFG, dimmer, transformer and converter units from different manufacturers are compatible.
- ➔ DALI control units and operating devices for the Comfort, Digidim and Kiss systems are not compatible with each other.



DALI Digidim



DALI Digidim Room Solution

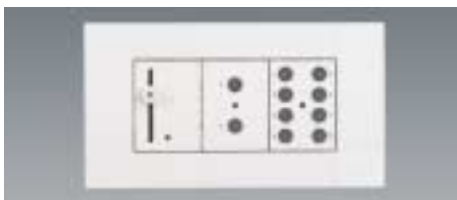
features control system for rooms | max. 63 DALI participants (panels, IO modules, sensors and actuators, luminaires etc.) | flexible, multifunctional, sensory

- 16 groups
- 15 scenes
- constant light controller
- IR remote control

benefits

- panel modules with integrated infrared receiver
- implementation with simple use of the infrared remote control (5LZ 905 303)
- with complex applications, the use of the Toolbox software (5LZ 905 502) or implementation by a service technician is recommended

panel module, stainless steel / carbon fibre, 1 gang
 4 scenes, lighter/darker, off
 order numbers:
 5LZ 905 125CF + 5LZ 905 203S
 B x H x installed depth:
 88 x 88 x 32mm



panel module, white, 3 gang
 slider, on/off, 7 scenes + off
 order numbers:
 5LZ 905 110 + 5LZ 905 122
 5LZ 905 126 + 5LZ 905 200D
 B x H x installed depth:
 160 x 88 x 32mm

panel module, white, 1 gang
 4 scenes, lighter/darker, off
 order numbers:
 5LZ 905 125 + 5LZ 905 200S
 B x H x installed depth:
 88 x 88 x 32mm



panel module, white, single
 twist adjustment, single
 lighter/darker, on/off
 order numbers:
 5LZ 905 100 + 5LZ 905 200S
 B x H x installed depth:
 88 x 88 x 32mm

stainless steel panel, complete
 slider, double
 lighter/darker, on/off
 order number:
 5LZ 905 111202
 B x H x installed depth:
 88 x 88 x 32mm

| Order No. | Type |
|--|--|
| <i>panel module, carbon fibre appearance ¹⁾</i> | |
| 5LZ 905 100CF | twist adjustment |
| 5LZ 905 110CF | slider, single |
| 5LZ 905 111CF | slider, double |
| 5LZ 905 121CF | 2 keys, on/off |
| 5LZ 905 122CF | 2 keys, lighter/darker |
| 5LZ 905 124CF | 5 keys, 4 scenes + off |
| 5LZ 905 125CF | 7 keys 4 scenes + lighter/darker + off |
| 5LZ 905 126CF | 8 keys 7 scenes + off |
| 5LZ 905 150CF | blind panel |
| 5LZ 905 170CF | infrared receiver |
| 5LZ 905 180CF | programming interfaces |
| <i>frontal frame for panel module, stainless steel ²⁾</i> | |
| 5LZ 905 203S | front frame single |
| 5LZ 905 203D | front frame triple |
| <i>panel module, stainless steel, complete ²⁾</i> | |
| 5LZ 905 100202 | twist adjustment |
| 5LZ 905 110202 | slider, single |
| 5LZ 905 111202 | slider, double |
| 5LZ 905 121202 | 2 keys, on/off |
| 5LZ 905 122202 | 2 keys, lighter/darker |
| 5LZ 905 124202 | 5 keys, 4 scenes + off |
| 5LZ 905 125202 | 7 keys 4 scenes+ lighter/darker + off |
| 5LZ 905 126202 | 8 keys 7 scenes + off |
| 5LZ 905 170202 | infrared receiver |
| <i>panel module, white ¹⁾</i> | |
| 5LZ 905 100 | twist adjustment, single |
| 5LZ 905 110 | slider, single |
| 5LZ 905 111 | slider, double |
| 5LZ 905 121 | 2 keys, on/off |
| 5LZ 905 122 | 2 keys, lighter/darker |
| 5LZ 905 124 | 5 keys, 4 scenes + off |
| 5LZ 905 125 | 7 keys 4 scenes + lighter/darker + off |
| 5LZ 905 126 | 8 keys 7 scenes + off |
| 5LZ 905 150 | blind panel |
| 5LZ 905 170 | infrared receiver |
| 5LZ 905 180 | programming interfaces |
| <i>frontal frame for panel module, white ²⁾</i> | |
| 5LZ 905 200S | front frame single |
| 5LZ 905 200D | front frame triple |

1) please order panel modules and front frames separately
 2) flush mounting in standard socket or standard double socket



Multisensor
light sensor, movement detector and infrared receiver
order number:
5LZ 905 312
Dia. x D x installed depth:
65 x 10 x 28mm



remote control
for control of 4 groups, 4 scenes, on/off, lighter/darker, and for the starting of simple operations
order number:
5LZ 905 303
B x L x H: 56 x 120 x 25mm

- DALI HFG, dimmer, transformer and converter units from different manufacturers are compatible.
- DALI control units and operating devices for the Comfort, Digidim and Kiss systems are not compatible with each other.

| Order No. | Type |
|------------------------------------|--|
| DALI-Digidim Multisensor | |
| 5LZ 905 302 | ceiling recessed |
| 5LZ 905 312 | ceiling recessed master/slave |
| 5LZ 905 312DAW | master/slave with surface-mounted housing |
| DALI-Digidim remote control | |
| 5LZ 905 303 | DALI Digidim IR remote control |
| DALI-Digidim I/O modules | |
| 5LZ 905 440 | input module, 8 inputs, serial installation, 4 modules |
| 5LZ 905 444 | input module, 4 inputs, wall box mounted |
| 5LZ 905 494 | relay unit, 4 x 10A, serial installation, 4 modules |
| 5LZ 905 490 | venetian blind unit, 2 independent channels, each 550W, serial installation, 4 modules |
| interface and software | |
| 5LZ 905 502 | Toolbox software with programming point interface cable and software CD |
| 5LZ 905 503 | AV package RS232 with programming point interface cable and software CD |

DALI System Components

| Order No. | Type |
|------------------------------|--|
| DALI bus power supply | |
| 5LZ 906 201 | DALI bus power supply 200mA, serial installation, 1 module |
| 5LZ 906 202 | DALI bus power supply 200mA, placed in ceiling void |
| 5LZ 905 402 | DALI bus power supply 250mA, serial installation, 2 modules |
| DALI converter | |
| 5LZ 904 201 | DALI converter 1-10V, 100mA, installed inside device with push-button input for manual control |
| 5LZ 904 202 | DALI converter 1-10V, 100mA, serial installation, 4 modules with push-button input for manual control |
| 5LZ 905 410 | DALI converter 1-10V, 15mA, installed inside device |
| 5LZ 905 472 | DALI converter 1-10V, 100mA or for 50 DSI devices, serial installation, 4 modules, mit DALI group change switch |
| 5LZ 906 104 | DALI DSI converter for 5 DSI devices, wall box mounted |
| DALI operating units | |
| 5LZ 905 452 | universal dimmer, leading and trailing edge, 1000W with DALI group change switch, serial installation, 4 modules |
| 5LZ 905 455 | dimmer, trailing edge, 500W for magnetic transformers and incandescent lamps, serial installation, 2 modules |
| 5LZ 906 112 | DALI electronic transformer 230V AC/12V 105VA, placed in ceiling void |



DALI KISS



**DALI KISS
Room Solution**

features simple manual control system for rooms | max. 64 DALI nodes
 ■ 16 groups
 ■ 16 scenes
 with supplementary DALI KISS modules

benefits

- DALI Mini touch panel for controlling groups and scenes | inc. 6 layout cards, for wall surface mounting, vertical or horizontal | white or silver | implementation of DALI lines possible
- allocation of DALI nodes to groups directly from the group modules with simple push-button sequences
- programming of light scenes from all scene modules (without PC or laptop)
- integration of KISS systems for programming and operation into existing office infra-structures with PC



DALI Mini Touch Panel
white, vertically mounted | group and scene operation, inc. 6 layout cards

DALI Mini Touch Panel
silver, horizontally mounted | group and scene operation, inc. 6 layout cards

| Order No. | Type |
|------------------------------|--|
| DALI touch panel Mini | |
| 5LZ 906 110 | DALI touch panel Mini, white, L x B x D: 83 x 117 x 12mm |
| 5LZ 906 110S | frame for touch panel, silver |
| DALI KISS modules | |
| 5LZ 906 101 | DALI KISS GC group module, wall box mounted |
| 5LZ 906 102 | DALI KISS SC scene module, wall box mounted |
| 5LZ 906 103 | DALI KISS RM relay module, wall box mounted |
| 5LZ 906 203 | DALI- ISS SCI computer interface RS 232, table surface mounted |



DALI KISS GC
group module with 2 independent inputs | operation of 2 DALI groups with conventional reflex switches



DALI KISS SC
scene module with 4 independent inputs | operation of 4 DALI scene with conventional reflex switches



DALI KISS SCI
serial computer interface (RS232) | controlled with winDIM/DALI KISS





Presence Detector

features multi-sensor | light and motion detector | motion-dependent constant light controller | precise, reliable presence detection | suitable for single and room solutions

- benefits
- square detection area, 6x6m with 2.5m mounting height
 - constant light controlling for optimal energy conservation
 - high level of operating comfort
 - 1-10V interface for controlling of light with reference to daylight component



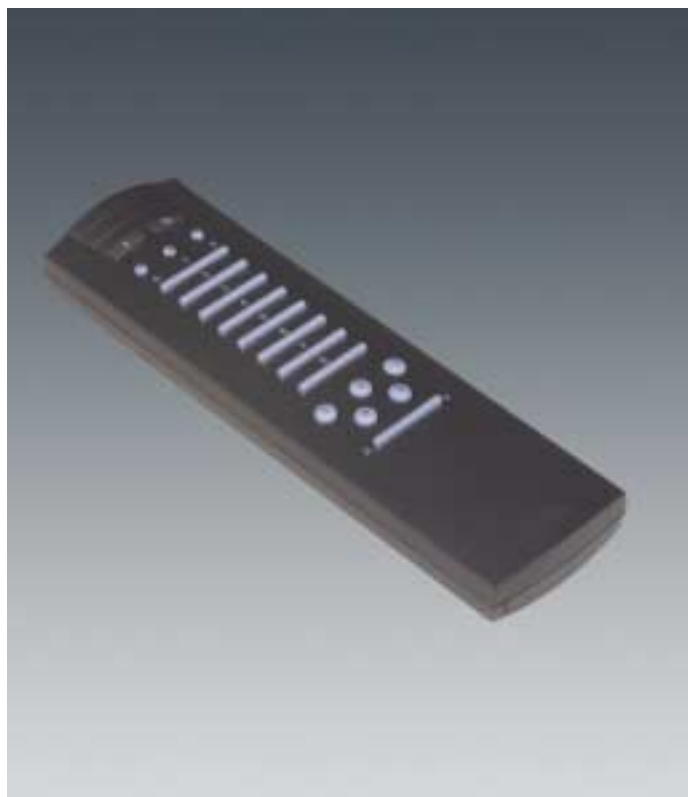
user remote control

service remote control

| Order No. | Type | B x H x D (mm) | | | ET (mm) |
|-------------|--------------------------------------|----------------|-----|----|---------|
| 5LZ 903 201 | Compact Office DIM, wall box mounted | 100 | 100 | 35 | 40 |
| 5LZ 903 202 | user remote control | 120 | 57 | 24 | |
| 5LZ 903 203 | service remote control | 62 | 140 | 30 | |

ET=installed depth





Comfort radio remote control
L x B x H: 81 x 81 x 17mm



radio wall transmitter
flat, white | individual operation
of 4 channels or 2 channels and
4 scenes
L x B x H: 81 x 81 x 17mm



radio light sensor
D x H: 52 x 23mm



radio presence detector
with integrated light sensor
for constant light
controlling
D x H: 103 x 42mm



radio control unit 1-10V
L x B x H: 187 x 28mm

Radio Remote Control

features light management system for luminaire control with radio technology (inc. floor-standing uplights and desktop luminaires) | wireless, i.e. no installation of control cables necessary | simple installation | high level of flexibility

benefits

- control signals emitted with electromagnetic waves (as opposed to infrared)
- electromagnetic waves pass through room partitioning and furniture
- use of systems approved in all EU and EFTA countries
- controlling of all lamp types including LED controlling of HFG with DALI and 1-10V interfaces

| Order No. | Type |
|---------------------------|---|
| radio transmitters | |
| 5LZ 902 035 | Comfort radio remote control, 24 channels, 5 light scenes |
| 5LZ 902 038 | Mini radio remote control, 2 channels |
| 5LZ 902 037 | radio wall transmitter, flat, white, 4 channels, wall surface mounted |
| 5LZ 902 036 | Mini radio multi-function transmitter, 4 channels, wall box mounted |
| radio sensors | |
| 5LZ 902 040 | radio light sensor, ceiling surface mounted |
| 5LZ 902 041 | radio presence detector, ceiling surface mounted |
| radio actuators | |
| 5LZ 902 031 | radio control unit 1-10V, installed in device/placed in ceiling void |
| 5LZ 902 034 | radio switching actuator, 1 channel, installed in device/placed in ceiling void |
| 5LZ 902 042 | Mini radio switching actuator, 1 channel, wall box mounted |
| 5LZ 902 044 | Mini radio switching actuator, 2 channels, wall box mounted |
| 5LZ 902 033 | radio blind actuator, wall box mounted |
| 5LZ 904 501 | DALI radio control unit, wall surface mounted |
| 5LZ 904 502 | radio hand programming device for DALI control unit |
| radio repeater | |
| 5LZ 902 043 | radio repeater, wall box mounted |